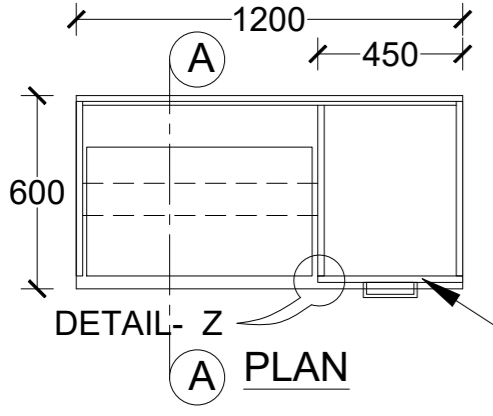


ELEVATION

INNER VIEW

SECTION - 'AA'

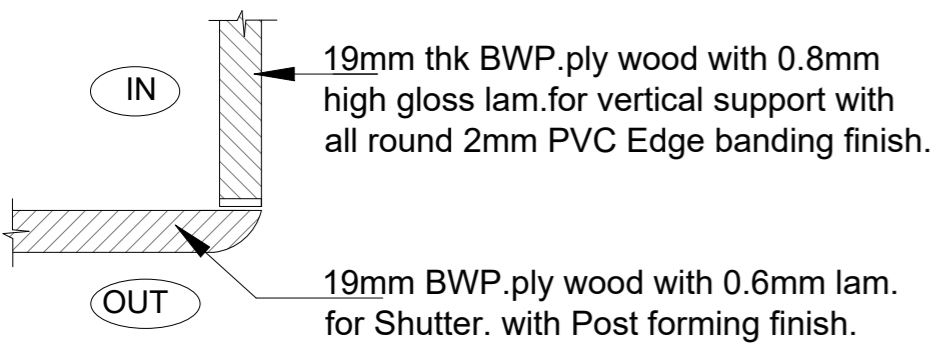


PLAN

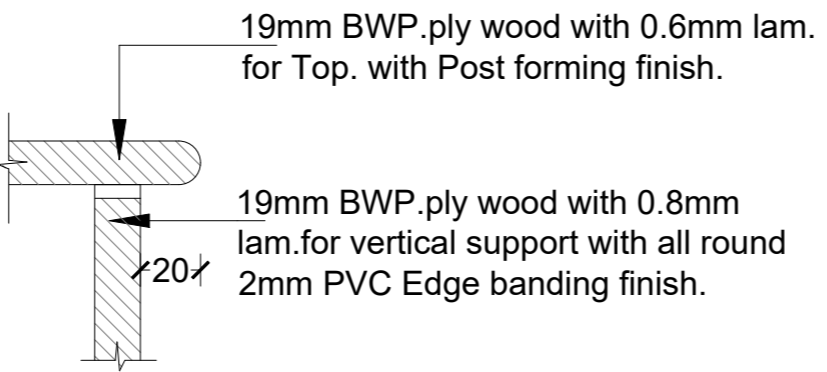
- Furniture Fittings :**
- 1. SS Clipon Hinges - 2Nos.
 - 2. Telescopic Channel 450mm - 1Set.
 - 3. Telescopic Channel 400mm - 1Set.
 - 4. SS Handle 100mm "D" Type - 2Nos.
 - 5. Hafele Lock & Key - 2Nos.

WORK TABLE WITH DRAWER & UNDER CUP BOARD & KEY BOARD
SIZE - 1200 x 600 x 750 - 1No.
SCHEDULE ITEM NO:

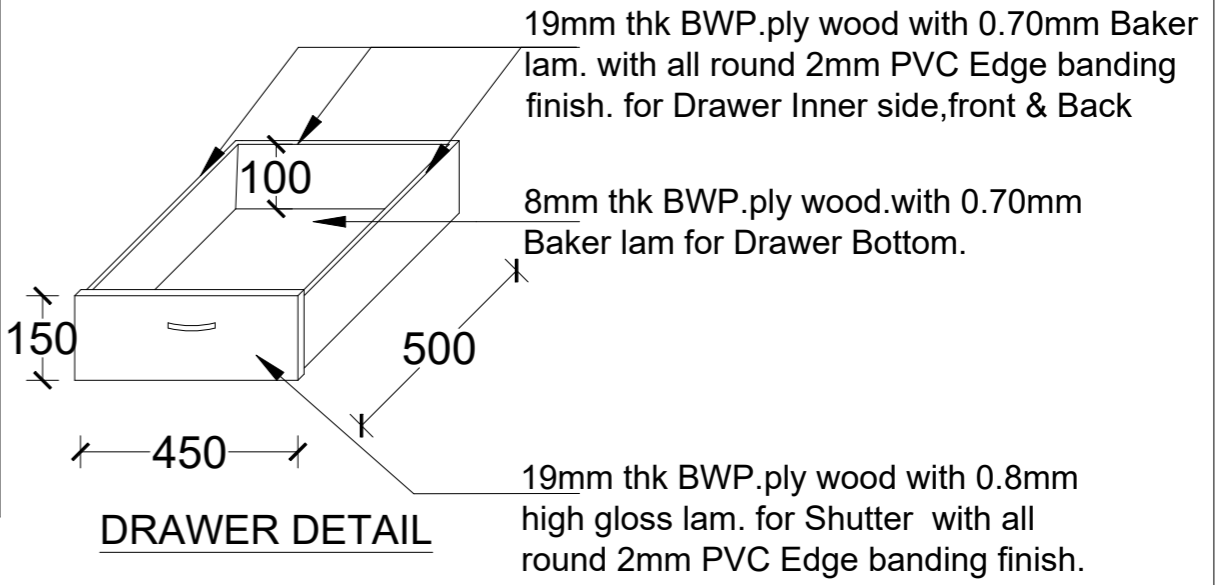
19mm BWP.ply wood with 0.6mm lam. for Shutter with post forming finish.



DETAIL 'Z'



DETAIL- 'X'



DRAWER DETAIL

- Note:**
- 1.All dimensions are in mm.
 - 2.All Mica make Merino / Sunmaica & Green lam.
 - 3.All sizes mentioned are approximate to suit at site conditions and actual measurements to be taken before executing the work.
 - 4.Water Proof (BWP) ply wood ISI 710 Grade make - Sharonply / Centuryply / Greenply & Archidply.
 - 5.All furniture fittings make - Hafele/Ebco/Hettich.
 - 6.All joint fixed with minifix & cam
 - 7.The rate inclusive of furniture fittings
 - 8.All hidden faces of plywood should be of white laminate (0.7mm thk) unless otherwise mentioned.
 - 9.Furniture color to be finalized by the user department.
 - 10.Rate inclusive of wire manager / up to 3" dia wherever needed
 - 12.Modular regular switch box will be supplied by the electrical dept.and the fixing to be done by the contractor wherever needed.

TENDER PURPOSE ONLY

CHRISTIAN MEDICAL COLLEGE-VELLORE		
MODIFICATION TO EXISTING O4 EAST WARD IN FOURTH FLOOR OF 'O' BLOCK AT CMC TOWN CAMPUS.		
O4 EAST WARD - FOURTH FLOOR		
WORK TABLE DETAIL		
CHECKED:DEVAKI.G	DRAWN: DHINAKARAN	PLANNING ENGINEER:
DATE: 07.03.2026	DRG.NO:CMC/O4E/F-01	